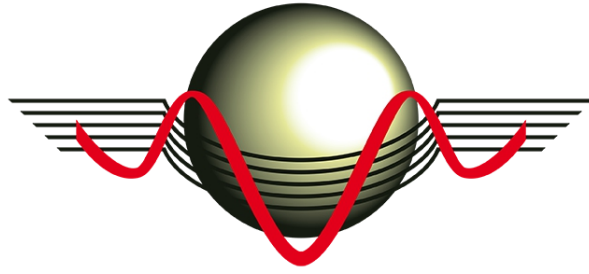


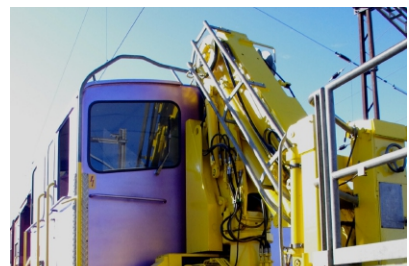
SAJET



# N 9 - T M 2 3 2 C H E R R Y   P I C K E R /   P L A T F O R M

---

R a i l w a y   v e h i c l e



## DESCRIPTION

This is a railway work vehicle.

This vehicle is designed for :

- = Travelling on the railway track
- = Lifting persons onto the railway track

## CHARACTERISTICS OF THE VEHICLE

Service weight	28 tonnes
Power of diesel engine	165 kW (225 hp) at 2'000 1 / min.
Maximum speed	60 km / h in line service 30 km / h in shunting service 80 km / h towed
Permissible towed load when working from the platform	Maximum 80 tonnes (depending on gradient)

## CHARACTERISTICS OF THE PLATFORM

Maximum load	1'200 kg
Duration of movements	Raise : approx. 90 seconds, at 9 m Lower : approx. 90 seconds, at -0.5 m Telescope : approx. 40 seconds Retract : approx. 25 seconds Swivel at 180° : approx. 75 seconds
Maximum speed	Approx. 10 km / h (shunting speed)
Maximum height	9 m

