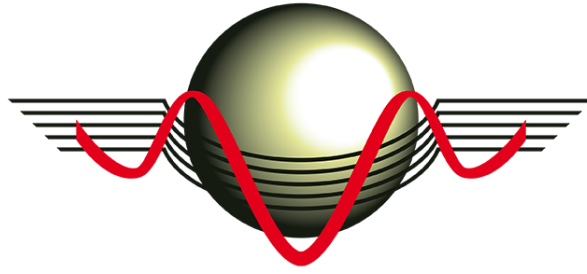


SAJET



# NACAB C14 CHERRY PICKER

---

Railway vehicle



## DESCRIPTION

This railway vehicle, diesel-powered, is designed for :

- = Travelling to access the railway track
- = Putting onto / taking off of the track
- = Travelling along the railway track
- = Lifting persons onto and off a railway track

## TECHNICAL CHARACTERISTICS

Max. working height	14 m
Maximum offset	8.7 m
Turret rotation limit	-180° / +180°
Platform dimensions	180×93 cm
Payload capacity	400 kg

### RAIL MODE

Maximum slope	4 %
Maximum spillage	20 cm
Maximum speed (in operation)	5 km / h
Maximum speed (while travelling)	16 km / h

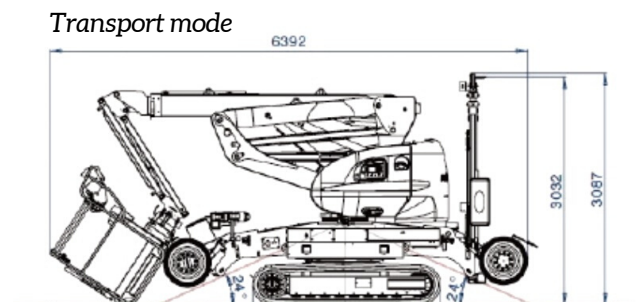
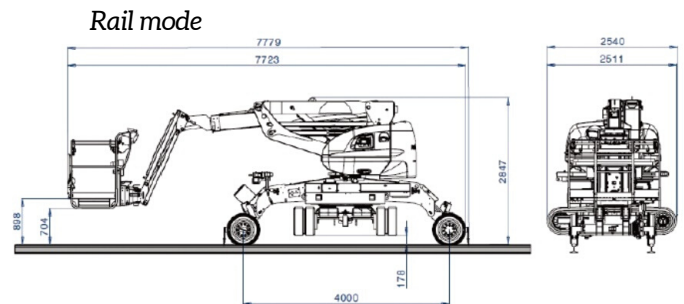
### OFF-ROAD MODE

Type of tracks	rubber
Maximum speed	1.5 km / h
Crossable slope	45 %

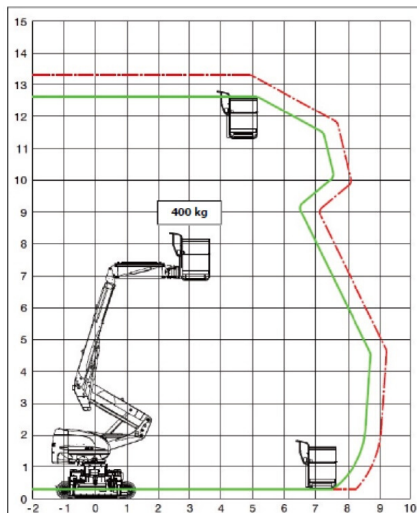
### TRANSPORT DIMENSIONS

Width	2.18 m
Length	6.4 m
Height	3.1 m
Weight	12'000 kg

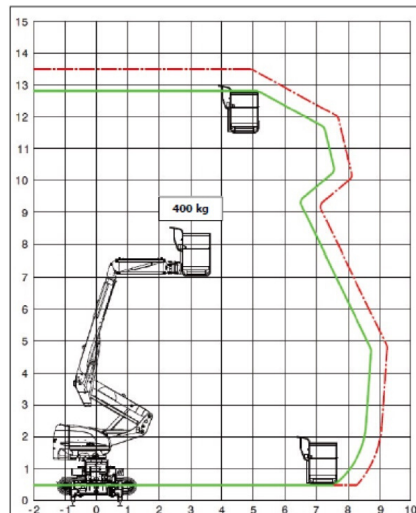
Option : measuring mast



Off-road mode, without slope



Rail mode, without slope



Rail and off-road mode, slope of 20 cm

