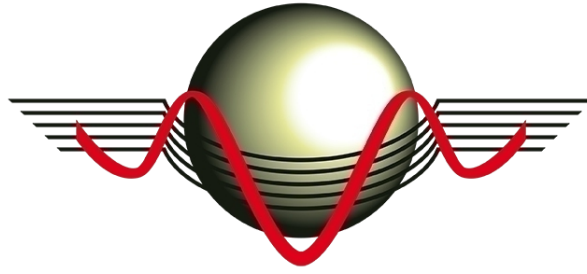
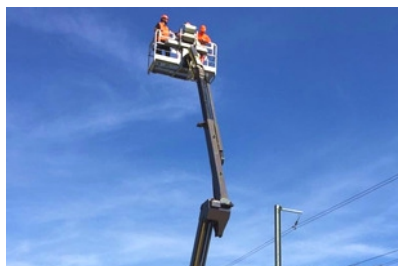


SAJET



400 RR CHERRY PICKER

Railway vehicle



DESCRIPTION

This vehicle is designed for :

- = Travelling to access the railway track
- = Putting onto / taking off of the track
- = Travelling along the railway track
- = Lifting persons onto and off a railway track

CHARACTERISTICS OF THE VEHICLE

Maximum speed on track	17 km / h
Maximum operating speed on track	2.5 km / h
Maximum speed on tyres	6 km / h
Equipment	Surveillance and manoeuvring camera, lights and rotating beacon

CHARACTERISTICS OF THE CHERRY PICKER

Maximum payload	400 kg
Maximum number of persons	3
Maximum lifting height	15.5 m from top of rails
Maximum range	8.3 m from track centreline
Average time to fold the cherry picker completely down from its highest position	1 min. 55 seconds

